

Christmas Youth

Scavenger Hunt

YOUR TASK IS TO FIND EACH OF THE ITEMS LISTED IN AND AROUND THE SHOPPING CENTRE (OR ON A POSTER OR WINDOW).

TAKE A SELFIE OR PHOTO OF AT LEAST ONE OF YOUR TEAM WITH THE ITEM TO PROVE YOU FOUND IT.

OBVIOUSLY STAY ON SANTA'S NICE LIST – REMEMBER THE SAFETY OF EVERYONE – STAY TOGETHER, KEEP YOUR MASKS ON, KEEP SOCIALLY DISTANCED 2 METRES FROM YOUR TEAM AND THE PUBLIC. NO NEED TO GO INSIDE SHOPS., DON'T TAKE PHOTOS OF THE PUBLIC

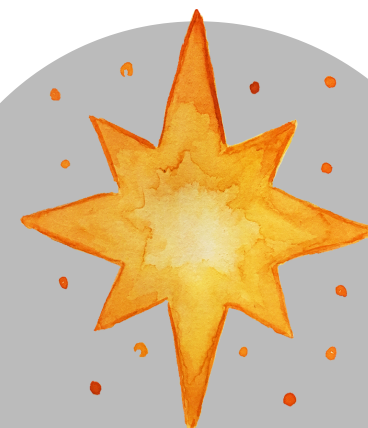
WITHOUT PERMISSION, DON'T TAKE PHOTOS INSIDE ANY SHOPS! BREAKING THESE RULES = DISQUALIFIED!

TEAM TO FIND THE MOST ITEMS & GET THE BEST PHOTOS WINS!

MEET AT THE INTU SHOPPING AREA NEAR WHERE THE OAK TREE USED TO BE BY 6.30PM FOR A SWEET TREAT REWARD!



**GIANT
christmas
tree**



star



Wrapped gift



**huge
reindeer**



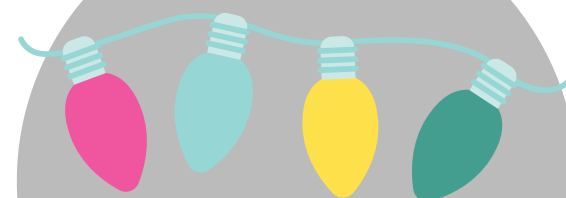
**Hanging
decoration**



**Socially distant
team photo**



Snowflake



**Christmas
lights**



Carousel



**Christmas
jumper**



**The word
'Hope'**



Santa Claus



Candy cane



**Nativity
scene**



Festive food

NOEL

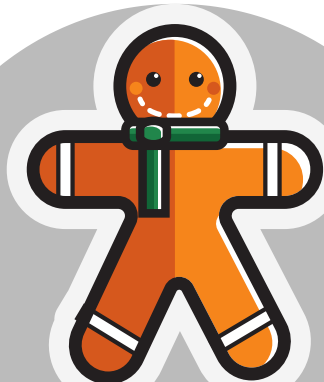
The word 'Noel'



A cuddly toy



**Christmas
train**



**gingerbread
person**



Snowman



Log cabin



robin